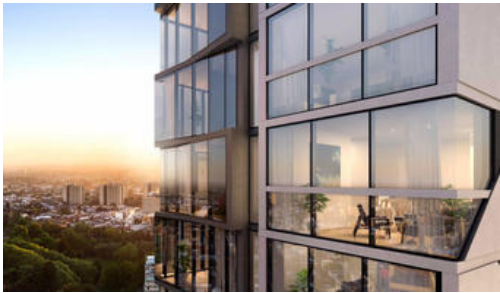




1603, 141 La Trobe St, Melbourne



The Peak on Latrobe

The Peak Apartments are located in the golden position on the northern end of Melbourne CBD. Superbly positioned on the high end of town in close proximity to Victoria State Library, Carlton Gardens, Melbourne Central and all the CBD has to offer.

Sale via nomination for this level 16 one-bedroom apartment. Save on the off the plan duty as per the original 2016 contract (conditions apply). Apartment 1603 is a well-designed apartment with a glittering easterly aspect.

A classic minimalist aesthetic has been created within the apartments with bright white contrasting against bursts of black and gold. It is a colour palette that maintains a sophisticated, luxurious look, whilst being timeless and elegant.

Floor to ceiling windows wrap the living space, providing panoramic views across the city, emphasising how truly special the location is.

Light timber floors bring a sense of warmth and natural texture that connects to the magnificent Carlton Gardens that reside below.

Estimated completion mid 2020. Get your hands on this beauty today. Call us to discuss further.

Disclaimer: Photos and images are indicative and to be used as a guide only. We have in preparing this document used our best endeavours to ensure that the information contained in this document is true and

 1  1

Price	\$489,000
Property Type	residential
Property ID	606

Agent Details

Winston Lo - 0458 323 782
Marcus Du - 0401080846

Office Details

Hot Spot Property Group
428 Waverley Rd Malvern East VIC
3145 Australia
03 8529 2668



HOT SPOT
PROPERTY GROUP