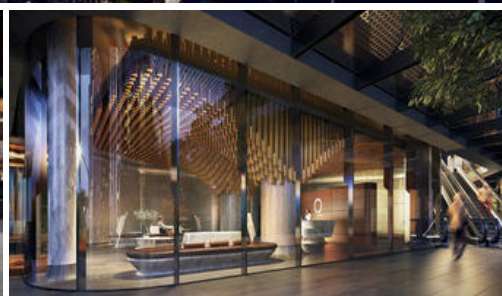


Sold



1007, 350 Queen Street, Melbourne



Queens Place Nomination

Situated at the fringe of Flagstaff Hill, this development has been collaboratively designed by architects **Fender Katsalidis** and **Cox Architecture**, with interiors by Hecker Guthrie.

Opportunity to take over the contract via nomination and save on the off the plan stamp duty as per the 2016 contract.

Spacious 1 bed plus study on Level 10 with 57sqm of internal living.

Intimate laneways, paths, and passages will snake through the twin towers at ground level and form a manifold of connections within the precinct, delivering convenience and enjoyment to Queens Place residents. Comprising 1,700 apartments across 80 levels, both towers will share a podium of five levels designed by Cox Architecture. Stained in earthy tones and exposed stonework, the podium will give the silver wall-glazed towers the illusion that they are floating high into the horizon.

Residents on **floors 7 to 50**, City Rise apartments, will have their own ground floor lobby and access to communal facilities on podium levels three to five. Other amenities include:

- A pool and spa
- Private dining rooms with caterer's kitchen
- A games room
- Private cinema
- Library, poker and mahjong room
- Private garden terrace

🛏 1 🗺 1

Price

Property Type

Property ID

SOLD

residential

534

Agent Details

James Du - 0410866736

Winston Lo - 0458 323 782

Office Details

Hot Spot Property Group
428 Waverley Rd Malvern East VIC
3145 Australia
03 8529 2668



HOT SPOT
PROPERTY GROUP